



CD66e Monoclonal Antibody

Catalog No	YP-Ab-16830
Isotype	IgG
Reactivity	Human
Applications	WB;IF;ELISA
Gene Name	CEACAM5
Protein Name	Carcinoembryonic antigen-related cell adhesion molecule 5
Immunogen	Purified recombinant fragment of human CD66e expressed in E. Coli.
Specificity	CD66e Monoclonal Antibody detects endogenous levels of CD66e protein.
Formulation	Ascitic fluid containing 0.03% sodium azide, 0.5% BSA, 50% glycerol.
Source	Monoclonal, Mouse
Purification	Affinity purification
Dilution	Western Blot: 1/500 - 1/2000. Immunofluorescence: 1/200 - 1/1000. ELISA: 1/10000. Not yet tested in other applications.
Concentration	1 mg/ml
Purity	≥90%
Storage Stability	-20°C/1 year
Synonyms	CEACAM5; CEA; Carcinoembryonic antigen-related cell adhesion molecule 5; Carcinoembryonic antigen; CEA; Meconium antigen 100; CD antigen CD66e
Observed Band	
Cell Pathway	Cell membrane ; Lipid-anchor, GPI-anchor . Apical cell membrane . Cell surface . Localized to the apical glycocalyx surface. .
Tissue Specificity	Expressed in columnar epithelial and goblet cells of the colon (at protein level) (PubMed:10436421). Found in adenocarcinomas of endodermally derived digestive system epithelium and fetal colon.
Function	function: Cell surface glycoprotein that plays a role in cell adhesion and in intracellular signaling. Receptor for E.coli Dr adhesins., PTM: Complex immunoreactive glycoprotein with a MW of 180 kDa comprising 60% carbohydrate., similarity: Belongs to the immunoglobulin superfamily. CEA family., similarity: Contains 7 Ig-like (immunoglobulin-like) domains., subunit: Homodimer. Binding of E.coli Dr adhesins leads to dissociation of the homodimer., tissue specificity: Found in adenocarcinomas of endodermally derived digestive system epithelium and fetal colon.,
Background	This gene encodes a cell surface glycoprotein that represents the founding member of the carcinoembryonic antigen (CEA) family of proteins. The encoded protein is used as a clinical biomarker for gastrointestinal cancers and may promote tumor development through its role as a cell adhesion molecule. Additionally, the encoded protein may regulate differentiation, apoptosis, and cell polarity. This gene is present in a CEA family gene cluster on chromosome 19.



Alternative splicing results in multiple transcript variants. [provided by RefSeq, Jul 2015],

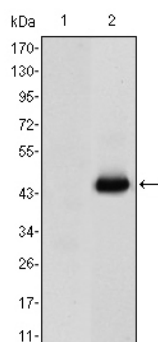
matters needing attention

Avoid repeated freezing and thawing!

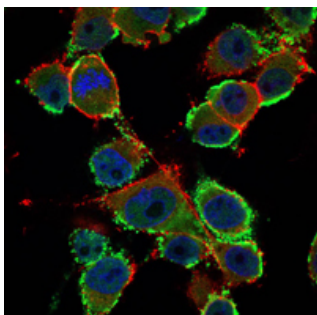
Usage suggestions

This product can be used in immunological reaction related experiments. For more information, please consult technical personnel.

Products Images



Western Blot analysis using CD66e Monoclonal Antibody against HEK293 (1) and CEA-hlgGfc transfected HEK293 (2) cell lysate.



Immunofluorescence analysis of PANC-1 cells using CD66e Monoclonal Antibody (green). Blue: DRAQ5 fluorescent DNA dye. Red: Actin filaments have been labeled with Alexa Fluor-555 phalloidin.

